

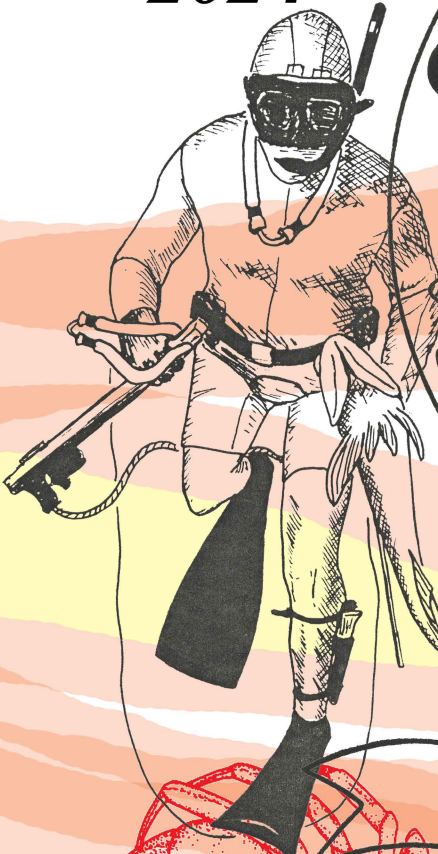


**AUSTRALIAN  
UNDERWATER  
FEDERATION  
QUEENSLAND BRANCH**



**AUGUST  
2024**

**Records  
&  
Field  
Guides**



**RECORDS**

**Part V  
Invertebrates**

**Mick McDade**  
Brighton Bayside C/van Park  
536 Beaconsfield Tce  
Brighton 4017  
m 0407745554  
mickmcdade@brisnet.org.au



# INVERTEBRATE SPEARFISHING RECORDS

In 2021, after consultation with the Australian Spearfishing Commissioner and the National and State Record Officers, eligible species for the Australian Spearfishing Records was extended to include some invertebrate species. The records are still decided according to weight, and requirements for weighing devices are the same as for finfish, but measurement and photo requirements .

The Qld (and Australian) invertebrate records started with a few historical captures which had the necessary ID photos, verified weights and details. These have now been added to by 2023 record claims. PART V? Parts I to IV left for the finfish records' larger files, and so last year's part IV is now part V.

## Eligible species

\*Species of the class *Cephalopoda* (Squid, Cuttlefish and Octopuses) are eligible with the following exceptions: Order *Nautilida* (Chambered Nautilus)

\*Species of the class *Crustacea* (Crayfish, Lobsters and Crabs, etc.)

## States have differing fisheries regulations. To be eligible:

\*Fisheries regulations that apply where the capture was made must be complied with. Fish (this includes invertebrates) that are protected under State or Federal Government regulations at that location are ineligible.

\*A minimum weight of 500 gm applies to all records.

\*Spearfishing Commission rules that apply to finfish also apply to invertebrates except as below.

### Specifically note:

\*Captures made with the aid of SCUBA, or any breathing aid other than a snorkel, are ineligible.

\*The spearo must be immersed when making the capture.

\*Assisted captures are not eligible.

\*Crustacea may be speared if this is legal at that location.

\*Spearfishing Commission rules are varied for invertebrates as follows:

Captures may be made using a tail loop, cray hook, or by gloved hand, provided the method used is legal at that location, (but must be immersed.) (Scuba is not permitted for records even if it is legal to use it under relevant Fisheries regulations.)

Invertebrates are measured in different ways to finfish, and photographs of the capture may be different to finfish and for records are as follows. These may need to be varied to show the capture meets size, or other Fisheries requirements where the capture was made. (Use your common sense.)

**All captures require photographs to prove the species identity. It is the responsibility of the spearo to prove the identity though the Records Officers will try to help.**

## As well as any legally required measurement:

**Octopus:** total length (top of head to out-stretched legs.)

**Squid and Cuttlefish:** mantle length. Photo of dorsal surface showing fins. Photo of suckers on leg club.

**Rock Lobsters, Crayfish:** total length (carapace to telson.) Photograph of dorsal surface tail extended. Photograph of ventral surface, tail extended, showing pleopods have not been removed.

**Crabs:** Any measurement specified under fisheries legislation (specify) otherwise tip to tip of lateral spines. Photograph of dorsal surface. Photograph of ventral surface.

# CRAYFISH of the genus PANULIRUS of QUEENSLAND

Members of this genus are usually referred to as **Spiny Lobsters** or **Tropical Rock Lobsters** in literature, but Qld spearos call them **crayfish** or **crays**, so those terms are used here.

**Common names:** Coral Cray and Painted Cray have been used as the name for a number of the genus. These names have also been used for the whole group by some authors. This duplication has added to the confusion most spearos have with which cray common names to use. They've been listed here where they've most commonly been used.

**How many species:** There are seven cray species literature cites as being found in Qld, but two that spearos haven't taken (and we don't have a photo, though you can find them on line by searching the scientific name.) NSW species may also reach the edge of our area.

## Mud Cray (recommended common name)

### *Panulirus polyphagus* (Herbst)

**Common names:** Mud Cray.

**Legs:** Light brown with creamy white blotches.

**Spines:** Spines tipped with yellow-orange. Frontal horns not large

**Antenna:** Light brown.

**Other points:** Body dull green, lateral carapace with two longitudinal creamy stripes that meet posteriorly. Creamy transverse band on the posterior edge of each abdominal segment.

**Distribution:** Northern Cape York, but uncommon in our area. Found in shallow turbid waters at depths 3-90 m, usually less than 40 m, on muddy substrates.

## White Whisker Cray (recommended common name)

### *Panulirus albiflagellum* Chan and Chu

**Common names:** White Whisker Cray.

**Legs:** Conspicuously striped with longitudinal white lines.

**Spines:**

**Antenna:** The "white whiskers" refers to the small feelers, not the large antenna. *It is a close relative of the Coral Cray (Red Cray) in which the small feelers are banded.*

**Other points:** Abdomen dark purple-brown covered with numerous white spots.

**Distribution:** Some areas of northern Cape York. A small cray found in shallow reef waters to 20 m but nowhere common.

**The other five species can be identified easily from this guide.**



# Blue-Faced Cray (recommended common name)

## *Panulirus penicillatus* (Oliver)

**Common names:** Pronghorn Cray, Blue-Faced Cray, Common Cray.

**Legs:** Conspicuously striped with white lines.

**Spines:** Spines tipped with yellow-orange. 4 frontal Horns, anterior pair about twice the height of secondary pair.

**Antenna:** Dark brown to black.

**Other points:** Only first abdominal segment has a pair of large white spots. Membranous areas of "face" light blue.

**Distribution:** Entire Qld coast, Great Barrier Reef and Coral Sea Reefs, but uncommon in our area. Found in shallow waters at depths 1-4 m, maximum 16 m.





# Coral Cray (recommended common name)

## *Panulirus longipes bispinosus* (A. Milne Edwards)

Still listed as *P. l. femoristriga* in most older texts.

**Common names:** Coral Cray, Red Cray, Blue-spot Cray, Purple Cray, Long-legged Cray.

**Legs:** Conspicuously striped with white lines.

**Spines:** Frontal horns dark but faced with white. Frontal Horns, anterior pair much higher than the height of secondary pair.

**Antenna:** Dark brown to black. Small whiskers are banded.

**Other points:** Main abdominal segments have a large white spot on each side. Generally a purple-brown colour with many small white spots on carapace and body. Lateral carapace with 2 horizontal longitudinal white stripes (lower longer.)

**Distribution:** Entire Qld east coast & Great Barrier Reef. Locally common. Found to depths of 20 m, occasionally deeper to 130 m.





# Ornate Cray (recommended common name)

## *Panulirus ornatus* (Fabricius)

**Common names:** Ornate Cray.

**Legs:** Black conspicuously blotched with white spots.

**Spines:** Anterior pair of frontal horns large, black with white marbling.

**Antenna:** Dark pink to blackish, base with intricate marbling.

**Other points:** Tail fan orange-brown. Abdomen green with some black shading and a cream spot on the side of each segment. Carapace bluish with orange spines to mauve marbling of the anterior part.

**Distribution:** Entire Australian coast, Great Barrier Reef and Coral Sea Reefs except southern coast of Australia. More common as one goes north and common in these areas. Usually found in shallow waters at depths 1-10 m, but can be found to 200 m.





# Headland Cray (recommended common name)

## *Panulirus homarus* (Linnaeus)

**Common names:** Scalloped cray, Headland Cray.

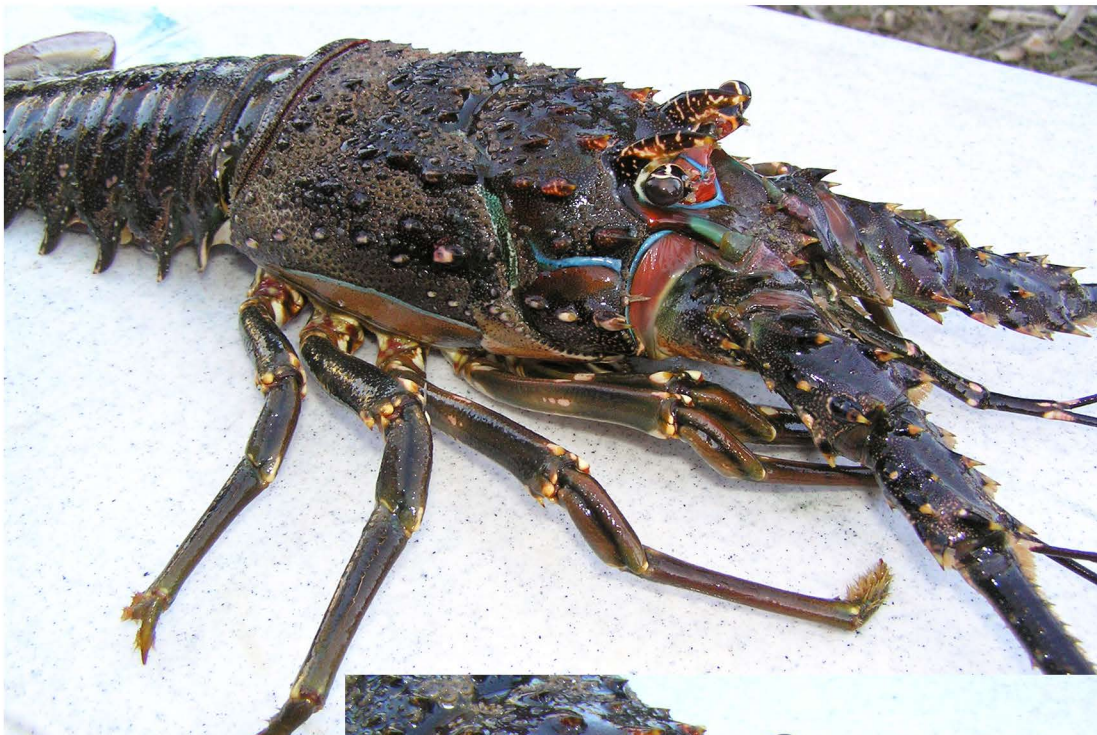
**Legs:** Greenish, upper leg segments occasionally blotched with creamy white and spines on leg joints creamy white tipped with brown.

**Spines:** Anterior pair of frontal horns much larger than secondary pair, and black, but banded by thin white lines.

**Antenna:** Dark green to black.

**Other points:** Body greenish to brownish, abdomen with many small white spots. Abdominal segments generally have a large white spot on each side and a central white spot, making three rows. It has a distinct blue "V" on its face contrasting with bright orange areas.

**Distribution:** Entire Qld coast & Great Barrier Reef, but usually around the mainland and inshore rocky islands. Found in shallow waters at depths 1-5 m, maximum 90 m.



# Painted Cray (recommended common name)

## *Panulirus versicolor* (Latreille)

**Common names:** Painted Cray.

**Legs:** Conspicuously striped with cream and black lines.

**Spines:** Spines tipped with yellow-orange. Anterior pair of frontal horns very large and patterned with contrasting creamy yellow and black.

**Antenna:** Base red/pink with yellow spines surrounded by black. Antenna pink lines. Young have an antenna that is almost entirely white.

**Other points:** Carapace orange with contrasting areas of black and creamy yellow. Abdomen greenish with transverse black and cream bands across rear of each segment.

**Distribution:** Entire Qld coast and Great Barrier Reef. Common in our area. Found in shallow waters at depths 1-4 m, maximum 16 m.





There are two slipper lobsters in northern Australia. Both widely distributed but uncommon. Both species grow quite large.

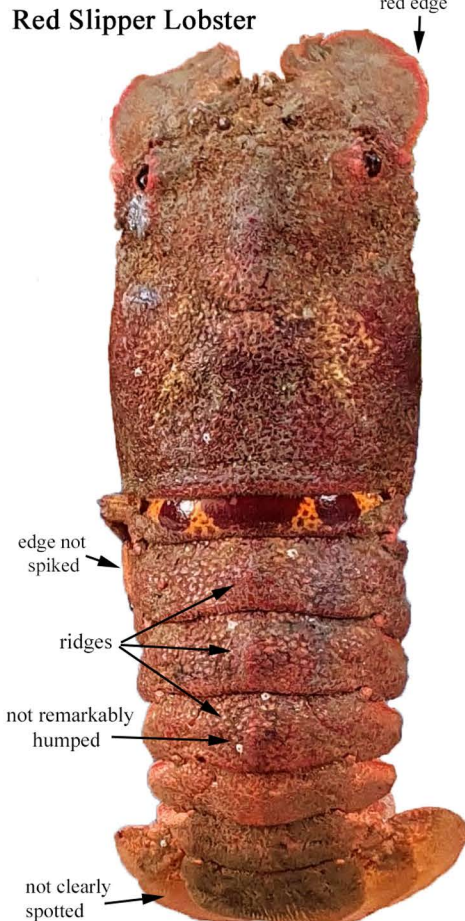
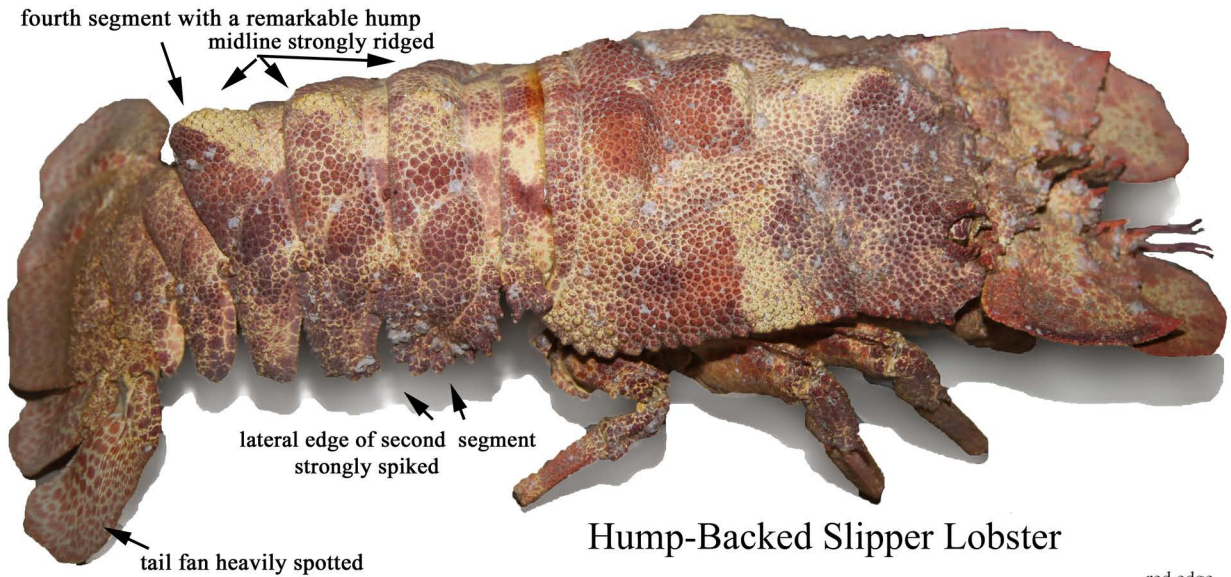
# Hump-Backed Slipper Lobster

(recommended common name)

## *Scyllarides haanii* (De Haan)

Common names: Hump-Backed Slipper Lobster, Aesop Slipper Lobster.

I.D. points: Dorsal midline of second, third and fourth tail segments strongly ridged, with that of the fourth segment produced into a remarkable hump. Lateral edge of second segment strongly spiked. Maximum length to 50 cm. Tail fan heavily spotted.



# Red Slipper Lobster

(rec. common name)

## *Scyllarides squammosus* (H. Milne Edwards)

Common names: Red Slipper Lobster, Blunt Slipper Lobster.

I.D. points: Dorsal midline of second, third and fourth tail segments weak to moderately ridged. Lateral edge of second segment not spiked. Edge of flat antenna with clear orange margin. Tail fan not clearly spotted. Maximum length to 40 cm.



There are a number of interesting crabs in Queensland waters besides the mud and blue swimmer crabs. Most of these are not commonly encountered by spearos.

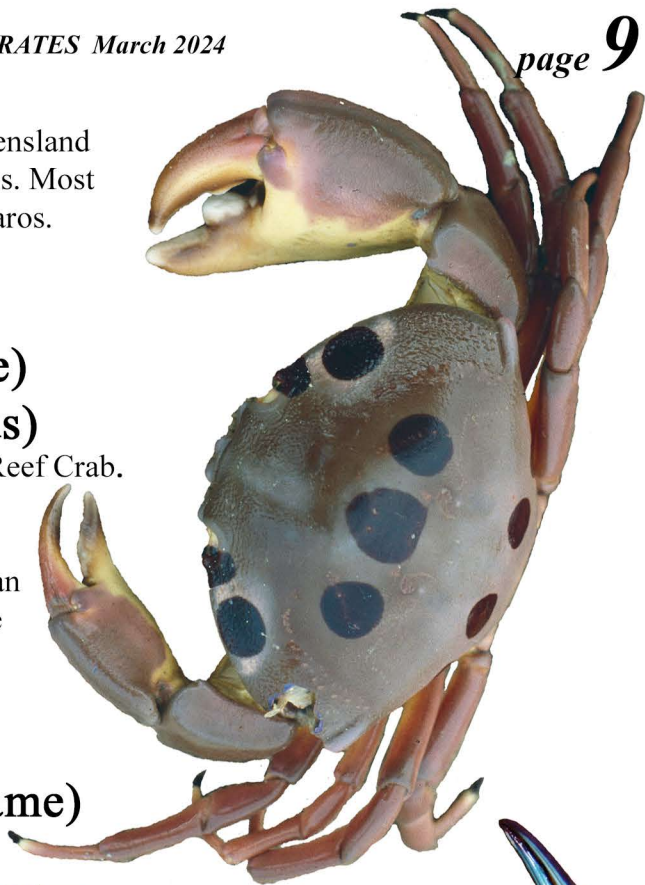
# Blood Spot Crab

(recommended common name)

*Carpilius maculatus* (Linnaeus)

Common names: Blood Spot Crab, Spotted Reef Crab.

I.D. points: Distinctive pattern of spots on carapace. A reef crab occasionally captured by spearos. Delicious to eat. There are reports it can be poisonous but this is unconfirmed. Carapace to 18 cm wide. A similar species *C. convexus* also occurs... has no spots.



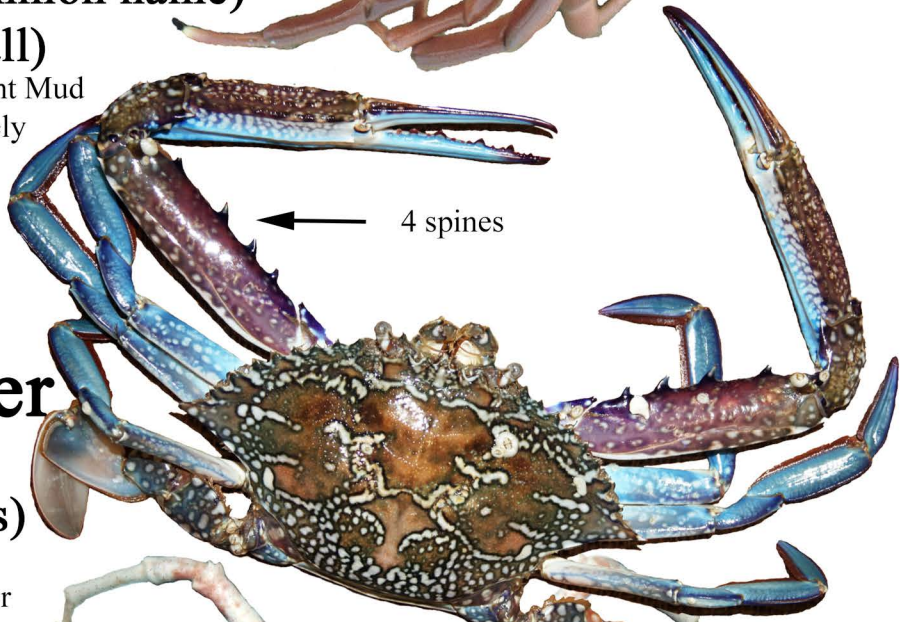
# Mud Crab (common name)

*Scylla serrata* (Forskall)

Common names: Mud Crab, Giant Mud Crab.

I.D. points: Of the four closely related species this is the largest and only one likely to be encountered in Qld.

Carapace width to 28 cm.



# Blue Swimmer

*Portunus armatus*

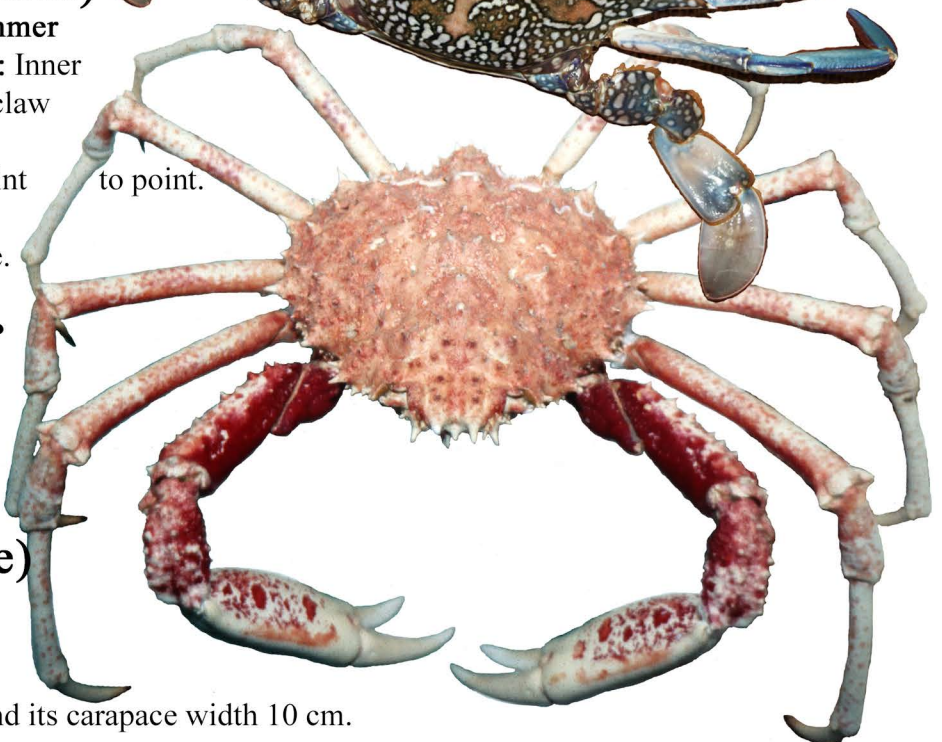
(A. Milne-Edwards)

Common names: Blue Swimmer Crab, Sand Crab.

I.D. points: Inner margin of bottom section of claw with 4 spines.

Carapace width to 20 cm, point to point.

A blue swimmer in excess of 500 gm will be over legal size.



# Red Spider Crab

*Leptomithrax*

*waitei* (Whitelegge)

Common names: Red Spider Crab

This specimen from Roberts Shoal, S.E. Qld from 15m, and its carapace width 10 cm.



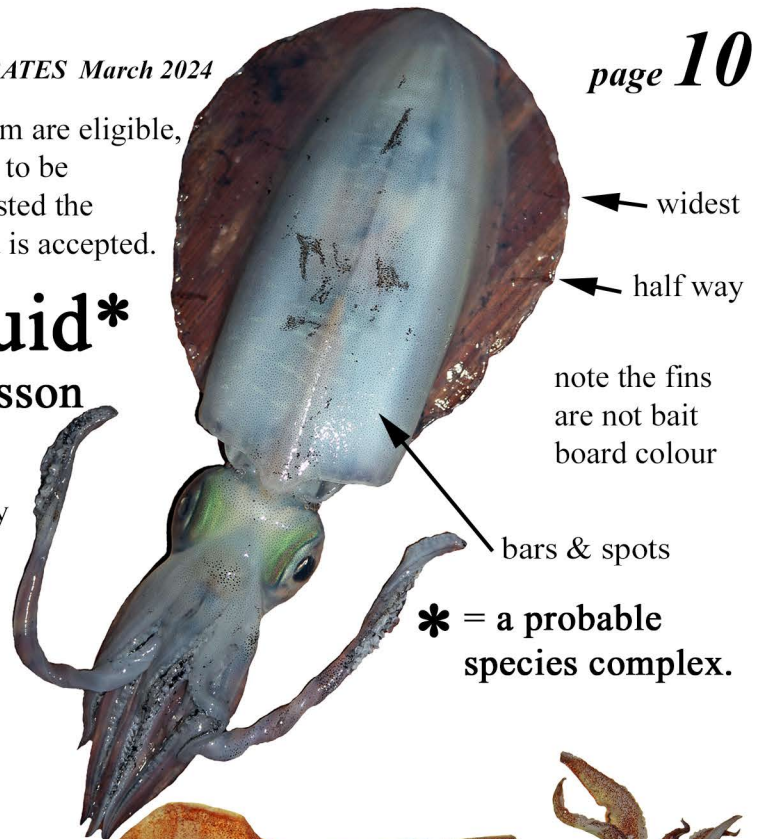
All species of Cephalophod reaching 500 gm are eligible, except nautilus. The Records Officers have to be satisfied of the identification, so it is suggested the animal be put in the freezer until the record is accepted.

## Big-fin Reef Squid\*

*Sepioteuthis lessoniana* Lesson

Common names: Big-fin Reef Squid, Tiger Squid, Northern Calamari.

I.D. points: The fins go almost the full way around the mantle, and are widest posterior to the midpoint, separating it from the Southern Calamari. Bars & spots across dorsal surfaces. Max. mantle length 40 cm.



\* = a probable species complex.

## Pencil Squid\*

*Photololigo spp*

Common names: Pencil Squid  
Can reach 20-30 cm mantle length.



## Diamond-back Squid

*Thysanoteuthis rhombus* (Troschel)

Common names: Diamond-back Squid, Diamond Squid, rhomboid squid.

I.D. points: Red colour. Large angular fins run full length of body. Mantle length to 120 cm.



Logan Opie  
MDUSC

## Southern Calamari\*

*Sepioteuthis australis* Quoy & Gaimard

Common names: Southern Calamari, Southern Reef Squid.

Is found in SE Qld waters. Fin nearly all around body, widest part of fin midway along mantle and has angular corner. Doesn't have the lines across mantle. Mantle length to 50cm.

## Giant Cuttlefish

*Sepia apama* (Gray)

Common names: Giant Cuttlefish, Australian Giant Cuttlefish.

Doesn't aggregate like it does in SA. Occasional Qld south around to WA. Mantle length to 50cm.



# 2024 AUFQ INVERTEBRATE RECORDS

## CRAYFISH *PALINURIDAE*

### *Panulirus homarus* (Linnaeus)

#### HEADLAND CRAY, SCALLOPED CRAY

J	-	-	-	-	-
W	1.606 kg	Jennifer Budworth	TGCFD	20/11/21	Kingscliff Rf, Tweed Coast, NSW
O	1.606 kg	Jennifer Budworth	TGCFD	20/11/21	Kingscliff Rf, Tweed Coast, NSW
A	1.606 kg	Jennifer Budworth	Qld	20/11/21	Kingscliff Rf, NSW

### *Panulirus longipes bispinosus* (A. Milne Edwards)

#### CORAL CRAY, PURPLE CRAY, LONG-LEGGED CRAY

J	-	-	-	-	-
W	-	-	-	-	-
O	1.335 kg	Phil Hall	SCS	30/8/24	Gneering Shoals, Sunshine Coast Qld
(TIE)		Mac Riddle	SCS	13/6/21	Pt Arkwright Sunshine Coast Qld
A	1.385 kg	Rhys Clay	Qld	25/8/23	Evans Heah, NSW

### *Panulirus ornatus* (Fabricus)

#### ORNATE CRAY

J	-	-	-	-	-
W	2.600 kg	Skye Tencate	MDUSC	3/11/23	Pearl Reef, GBR off Innisfail
O	4.200 kg	Cody Ainslie	MDUSC	15/9/22	Adelaide Rf, GBR off Innisfail
A	4.200 kg	Cody Ainslie	Qld	15/9/22	Adelaide Rf, Qld

### *Panulirus penicillatus* (Olivier)

#### BLUE-FACED CRAY, PRONGHORN CRAY

J	-	-	-	-	-
W	-	-	-	-	-
O	3.160 kg	Zachary Smith	BSC	29/12/14	North West Island, Capricorn Group
A	3.160 kg	Zachary Smith	Qld	29/12/14	North West Island, Qld

### *Panulirus versicolor* (Latreille)

#### PAINTED CRAY

J	2.260 kg	Caden Tencate	MDUSC	21/10/23	Digby Island, off C. Palmerston
(TIE)		Logan Opie	MDUSC	15/9/22	Adelaide Rf, GBR off Innisfail
W	1.950 kg	Amanda Opie	MDUSC	23/7/23	Credlin Reef, GBR off Mackay
O	3.260 kg	Duncan Limpus	BSC	26/7/14	Fitzroy Reef, Bunker Group, Qld
A	3.260 kg	Duncan Limpus	Qld	26/7/14	Fitzroy Reef, Qld

## SLIPPER LOBSTERS & BUGS *SCYLLARIDAE*

### *Scyllarides squamosus* (H. Milne Edwards)

#### RED SLIPPER LOBSTER, BLUNT SLIPPER LOBSTER

J	-	-	-	-	-
W	-	-	-	-	-
O	1.255 kg	Rhys Clay	SCS	16/10/21	Mudjimba Island, Sunshine Coast
A	1.255 kg	Rhys Clay	Qld	16/10/21	Mudjimba Island, Qld

## SWIMMING CRABS *PORTUNIDAE*

### *Portunus aramatus* (H. Milne Edwards)

#### BLUE SWIMMER CRAB, SAND CRAB

J	-	-	-	-	-
W	-	-	-	-	-
O	0.555 kg	Duncan Limpus	BSC	25/5/13	Bundaberg Coastline
A	0.555 kg	Duncan Limpus	Qld	25/5/13	Bundaberg Coastline

## SQUID, CUTTLEFISH & OCTOPUS *CEPHALOPODA*

### *Sepioteuthis lessoniana* Lesson

#### BIG-FIN REEF SQUID, TIGER SQUID, NORTHERN CALAMARI

J	-	-	-	-	-
W	1.500 kg	Ammie 'Opal' Stone	SCS	17/8/23	Great Keppel Is., Capricorn Coast
O	2.070 kg	Adrian Chapman	BSC	2/8/22	Lamont Reef, Bunker Group
A	2.070 kg	Adrian Chapman	Qld	2/8/22	Lamont Reef, Bunker Group

### *Sepia apama* (Gray)

#### GIANT CUTTLEFISH, AUSTRALIAN GIANT CUTTLEFISH

J	4.580 kg	Logan Opie	MDUSC	17/10/22	Gilbert Rf, GBR Qld
W	-	-	-	-	-
O	4.580 kg	Logan Opie	MDUSC	17/10/22	Gilbert Rf, GBR Qld
A	5.640 kg	Kym Bray	SA	20/4/92	Port Giles, SA

Send in open, women's and junior claims.

Especially keep Cephalopods (squid, cuttlefish and octopus until the record is passed.)



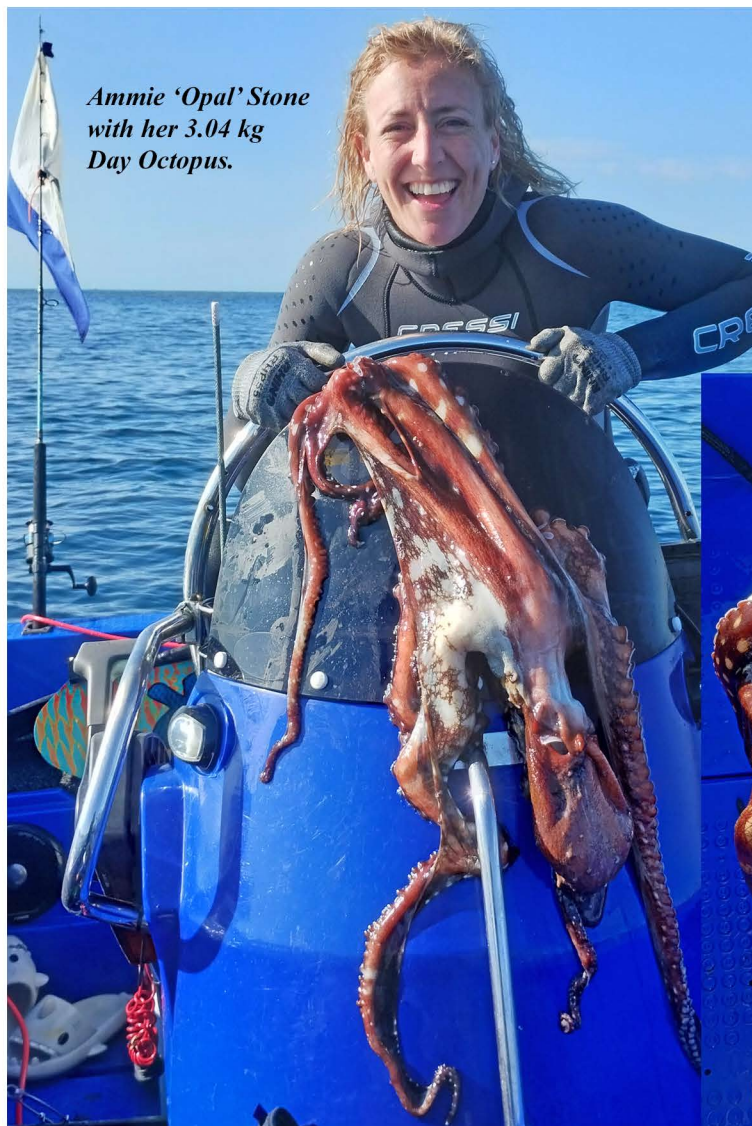
**SQUID, CUTTLEFISH & OCTOPUS CEPHALOPHODA (Cont.)**

<i>Octopus sp</i>		OCTOPUS sp*			
J	-	-	-	-	-
W	2.330 kg Indigo Sussmilch	SCS	2/8/22	Lamont Reef, Bunker Group, Qld	
O	2.330 kg Indigo Sussmilch	SCS	2/8/22	Lamont Reef, Bunker Group, Qld	
A	2.330 kg Indigo Sussmilch	Qld	2/8/22	Lamont Reef, Qld	

\* In consultation with the Australian Records Officer it was decided to use a general “octopus sp” category for those octopus we do not have the ability to identify. This is not done elsewhere in the records, and it is not intended to set a president with other groups. Having the general listing should not disadvantage those who have an octopus which can be recorded under its correct specific name,

<i>Octopus cyanea Gray</i>		DAY OCTOPUS			
J	-	-	-	-	-
W	3.04 kg Ammie ‘Opal’ Stone	SCS	31/7/23	Mudjimba Island, Sunshine Coast	
O	3.04 kg Ammie ‘Opal’ Stone	SCS	31/7/23	Mudjimba Island, Sunshine Coast	
A	3.04 kg Ammie ‘Opal’ Stone	Qld	31/7/23	Mudjimba Island, Sunshine Coast	

Send in open, women’s and junior claims.  
Especially keep Cephalopods (squid, cuttlefish and octopus until the record is passed.)



The colour pattern of the Day Octopus, shown below, is distinctive despite colours being variable.



## **STATE RECORDS OFFICERS**

Record applications can alternately be submitted through the appropriate state's records officer to also apply for the relevant state record

### **QLD**

Mick McDade  
AUF Q Records Officer  
Brighton Bayside C/van Park  
536 Beaconsfield Tce  
Brighton 4017  
Mobile 0407745554 home 07 32694683  
Email [mickmcdade@brisnet.com.au](mailto:mickmcdade@brisnet.com.au)  
(Qld state record claim fee nil.)

### **NSW**

Trevor Ketchion  
AUF NSW Records Officer  
116 Drews Rd  
Loganholme Qld 4129  
Mob: 0401595413  
Email: [trevor.nswrecords@gmail.com](mailto:trevor.nswrecords@gmail.com)  
(NSW state record claim fee nil.)

### **VIC**

Nathan Watson  
AUF VIC Records Officer  
21 Affleck St Wandong, 3758 VIC  
Mob: 0409244796  
Email: [i\\_m\\_bored\\_@hotmail.com](mailto:i_m_bored_@hotmail.com)

### **SA**

Dave Scholefield & Geoff Atkins  
AUF SA Records Officer  
PO Box 271  
Mount Compass, SA 5210  
Mob: Dave 0409598470 Geoff  
0421047862  
Email: [d\\_scholefield@outlook.com](mailto:d_scholefield@outlook.com)

### **WA**

Barry Paxman  
WA Spearfishing Commission  
13 David Crescent  
Hillarys, WA 6025  
Mob: 0430455122  
Email: [paxmen@optusnet.com](mailto:paxmen@optusnet.com)

### **NT**

Jade Dean  
AUF NT Records Officer  
PO Box 53  
Nhulunbuy, NT 0880  
Mob: 0488973882  
Email: [jadedean@live.com.au](mailto:jadedean@live.com.au)





# Australian Underwater Federation Inc.

## APPLICATION FOR NATIONAL AND/OR STATE SPEARFISHING RECORD (PRINT IN BLOCK LETTERS)

This form must be accompanied by **CLEAR PHOTOGRAPHS** showing length and girth of species. It is preferred an object for scale or a tape measure is shown in the photo. Refer to guide for additional invertebrate requirements.

SPECIES (Scientific Name).....

(Common Name).....

Reference or Identification Source.....

Weight.....Length.....Max.Girth.....Invertebrate Measurements.....

Date of Capture.....Place of Capture.....State of Capture.....

Category of Application:     National             State .....  
    Open                     Women's             Junior (under 18)

Full Name of Applicant.....

Postal address.....

Phone No.....Email address.....

Affiliated Club.....State Branch.....

Registered AUF Membership No.....

Type of Equipment Used (handspear or speargun).....

### AFFIDAVIT

We, the undersigned, declare that the above named fish was landed without assistance and that the above information and statements are true. This fish was taken by the diver in accordance within the rules of the AUF.

**SIGNATURE OF DIVER**.....

### Witness to catch

NAME.....SIGNATURE.....

ADDRESS.....Phone No.....

We, the undersigned, do hereby further make oath that the above named fish was weighed in our presence and that the weight is correct as stated.

### Weigh master

NAME.....SIGNATURE.....

ADDRESS.....Phone No.....

Type of Scales Used - provide all details: **Brand, model, certification, calibration certificate**. Photos preferred where possible .....

### Independent Witness to weighing

NAME.....SIGNATURE.....

ADDRESS.....Phone No.....

TRANSFER \$10 APPLICATION FEE TO:

AUF RECORDS **BSB: 923100 ACCOUNT: 46308411 REFERENCE: APPLICANT'S NAME**

BANK TRANSFER RECEIPT NUMBER.....

SEND APPLICATION AND ALL PHOTOS/ADDITIONAL INFORMATION TO [aufrecords@yahoo.com](mailto:aufrecords@yahoo.com)

FOR ANY FURTHER INFORMATION CONTACT VIN RUSHWORTH: 0407122067